

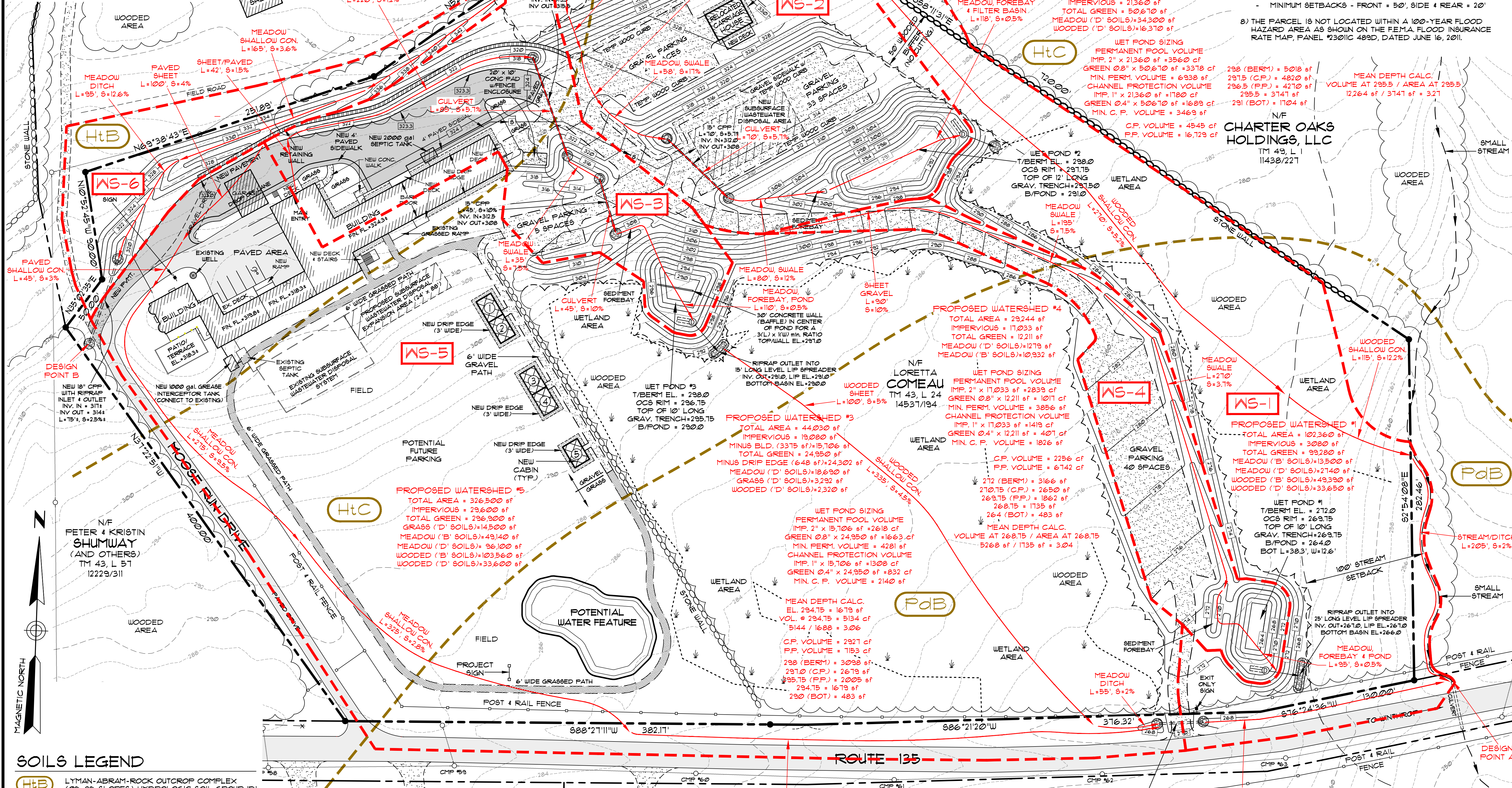
LOCATION MAP

LEGEND

- BOUNDARY LINE (SUBJECT PARCEL)
- BOUNDARY LINE (OTHER PARCEL)
- IRON PIPE OR ROD (PER NOTE 1 PLAN)
- NOW OR FORMERLY
- BOOK AND PAGE NUMBER
- TAX MAP AND LOT NUMBER
- EXISTING CONTOUR (SEE NOTE 4)
- UTILITY POLE WITH OVERHEAD WIRES
- STONE WALL
- TREE LINE
- POST & RAIL FENCE
- WIRE FENCE
- GRAVEL AREA
- EXISTING PAVEMENT
- EXISTING BUILDING

NOTES

- 1) BOUNDARY INFORMATION WAS TAKEN FROM A PLAN ENTITLED "BOUNDARY SURVEY PLAN, PORTION OF PROPERTY OF ROBERT F. WOOLWORTH AND VICTOR RABY, TRUSTEES OF THE ROBERT F. WOOLWORTH TRUST U/W/O PAULINE E. WOOLWORTH", DATED APRIL 2001, PREPARED BY THAYER ENGINEERING COMPANY.
- 2) PROPERTY OWNER INFORMATION WAS TAKEN FROM TOWN OF MONMOUTH ASSESSING RECORDS.
- 3) ALL BOOK AND PAGE NUMBERS REFER TO THE KENNEBEC COUNTY REGISTRY OF DEEDS.
- 4) OWNER OF RECORD - LORETTA COMEAU DEED REFERENCE - BOOK 14531, PAGE 194 TAX MAP 43, LOT 24
- 5) PARCEL AREA = 12.72 ACRES
- 6) CONTOUR LINES (2' INTERVAL, LIDAR) WERE DOWNLOADED FROM THE NOAA WEBSITE AND ARE DATED 2021.
- 7) PER MONMOUTH COMPREHENSIVE DEVELOPMENT ORDINANCE:
 - MINIMUM LOT SIZE = 40,000 sf
 - MINIMUM STREET FRONTAGE
 - A) 200' ON AN EXISTING ROAD
 - B) 150' ON NEW ROAD
 - MINIMUM SETBACKS - FRONT = 50', SIDE & REAR = 20'
- 8) THE PARCEL IS NOT LOCATED WITHIN A 100-YEAR FLOOD HAZARD AREA AS SHOWN ON THE FEMA FLOOD INSURANCE RATE MAP PANEL #2301C 489D, DATED JUNE 16, 2011.



SOILS LEGEND

HtB	LYMAN-ABRAM-ROCK OUTCROP COMPLEX (0%-8% SLOPES), HYDROLOGIC SOIL GROUP 'D'
HtC	LYMAN-ABRAM-ROCK OUTCROP COMPLEX (8%-15% SLOPES), HYDROLOGIC SOIL GROUP 'D'
PdB	FAXTON-CHARLTON FINE SANDY LOAMS (3%-8% SLOPES), HYDROLOGIC SOIL GROUP 'B'

MEAN DEPTH CALC.

EL. AT 295.5 / AREA AT 295.5	12.64 sf / 3741 sf = 3.21
298 (BERM) = 508 sf	
297.5 (C.P.) = 4820 sf	
296.5 (P.F.) = 4270 sf	
295.5 = 3741 sf	
291 (BOT) = 1704 sf	

WET POND SIZING
 PERMANENT POOL VOLUME
 IMP. 2" x 21360 sf = 3560 cf
 GREEN 0.8" x 50670 sf = 3378 cf
 MIN. PERM. VOLUME = 6938 cf
 CHANNEL PROTECTION VOLUME
 IMP. 1" x 21360 sf = 1780 cf
 GREEN 0.4" x 50670 sf = 1629 cf
 MIN. C.P. VOLUME = 3469 cf
 C.P. VOLUME = 4545 cf
 P.F. VOLUME = 16729 cf

WET POND #1
 T/BERM EL. = 212.0
 OCS RIM = 263.75
 TOP OF 10' LONG GRAY. TRENCH = 263.75
 B/POND = 264.0
 BOT L = 38.3', W = 12.6'

WET POND #2
 T/BERM EL. = 238.0
 OCS RIM = 291.75
 TOP OF 12' LONG GRAY. TRENCH = 291.50
 B/POND = 291.0

WET POND #3
 T/BERM EL. = 238.0
 OCS RIM = 296.75
 TOP OF 10' LONG GRAY. TRENCH = 295.75
 B/POND = 290.0

WET POND #4
 T/BERM EL. = 272.0
 OCS RIM = 263.75
 TOP OF 10' LONG GRAY. TRENCH = 263.75
 B/POND = 264.0
 BOT L = 38.3', W = 12.6'

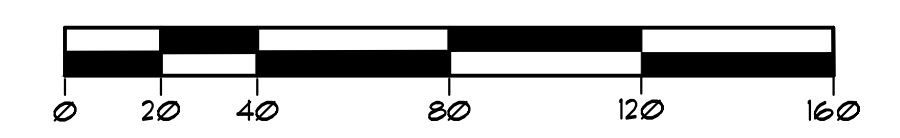
WET POND #5
 T/BERM EL. = 298.0
 OCS RIM = 296.75
 TOP OF 12' LONG GRAY. TRENCH = 291.50
 B/POND = 291.0

WET POND #6
 T/BERM EL. = 298.0
 OCS RIM = 296.75
 TOP OF 12' LONG GRAY. TRENCH = 291.50
 B/POND = 291.0

WET POND #7
 T/BERM EL. = 298.0
 OCS RIM = 296.75
 TOP OF 12' LONG GRAY. TRENCH = 291.50
 B/POND = 291.0

WET POND #8
 T/BERM EL. = 298.0
 OCS RIM = 296.75
 TOP OF 12' LONG GRAY. TRENCH = 291.50
 B/POND = 291.0

WET POND #9
 T/BERM EL. = 298.0
 OCS RIM = 296.75
 TOP OF 12' LONG GRAY. TRENCH = 291.50
 B/POND = 291.0



SJR ENGINEERING, INC.
 16 THURSTON DRIVE
 MONMOUTH, MAINE 04259
 (207) 242-6248 tel
 steve@sjreng.com

POST WATERSHED PLAN
 WATER RUNS
 PREPARED FOR
CHASE MORRILL

19 MOOSE RUN DRIVE - MONMOUTH, MAINE

DATE	PROJECT
FEB. 2026	1
DRAWN BY	SCALE
SJR	1" = 40'

SHEET WS-2

THIS PLAN SHALL NOT BE MODIFIED WITHOUT WRITTEN PERMISSION FROM SJR ENGINEERING, INC.