

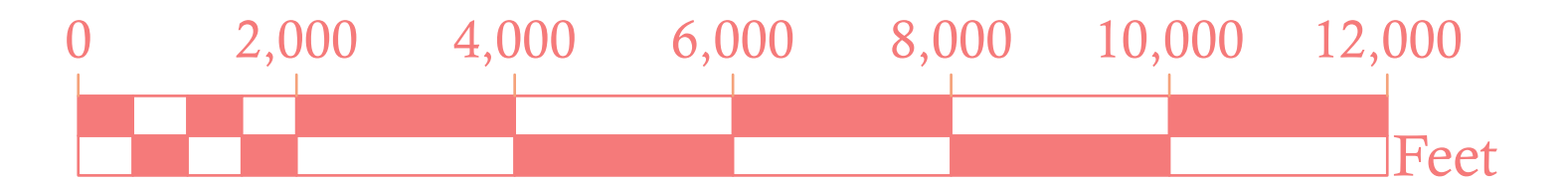
# Town of Monmouth Land Use Map

Last updated June 2021

## Legend

	Resource Protection District
	Rural District
	Shoreland Residential District
	Limited Residential District
	General Development District
	Stream Protection District
	Recreation Business Lake Protection District
	Wetlands
	Lakes, Ponds, Rivers, and Streams

## Graphic Scale



## NOTES:

1. THE TOWN OF MONMOUTH LAND USE MAP IS BASED OFF OF THE TOWN OF MONMOUTH SHORELAND ZONING ORDINANCE (EFFECTIVE DATE: DECEMBER 14, 1991 | LAST AMENDED: JUNE 8, 2021)

2. THE LAND USE MAP IS COMPILED FROM OR BASED ON THE FOLLOWING SOURCES:

-MONMOUTH ROAD AND PARCEL DATA IS FROM THE TOWN OF MONMOUTH 911 STREET MAP.

-MAP SHOWING TOWN OF MONMOUTH WETLANDS, HABITAT, AND CRITICAL RESOURCE AREAS SOURCED FROM THE STATE OF MAINE DEPARTMENT OF INLAND, FISHERIES, AND WILDLIFE AS WELL AS THE US FISH AND WILDLIFE NATIONAL WETLANDS INVENTORY (<https://www.fws.gov/wetlands/>).

-LAKE, POND, STREAM, AND RIVER DATA AQUIRED FROM THE US GEOLOGICAL SURVEY NATIONAL HYDROGRAPHY DATASET (NHD).

3. THE PURPOSE OF THE TOWN OF MONMOUTH LAND USE MAP IS TO SHOW PORTIONS OF THE TOWN OF MONMOUTH SUBJECT TO THE TOWN OF MONMOUTH SHORELAND ZONING ORDINANCE, REFER TO SAID ORDINANCE FOR DEFINITION OF DISTRICTS.

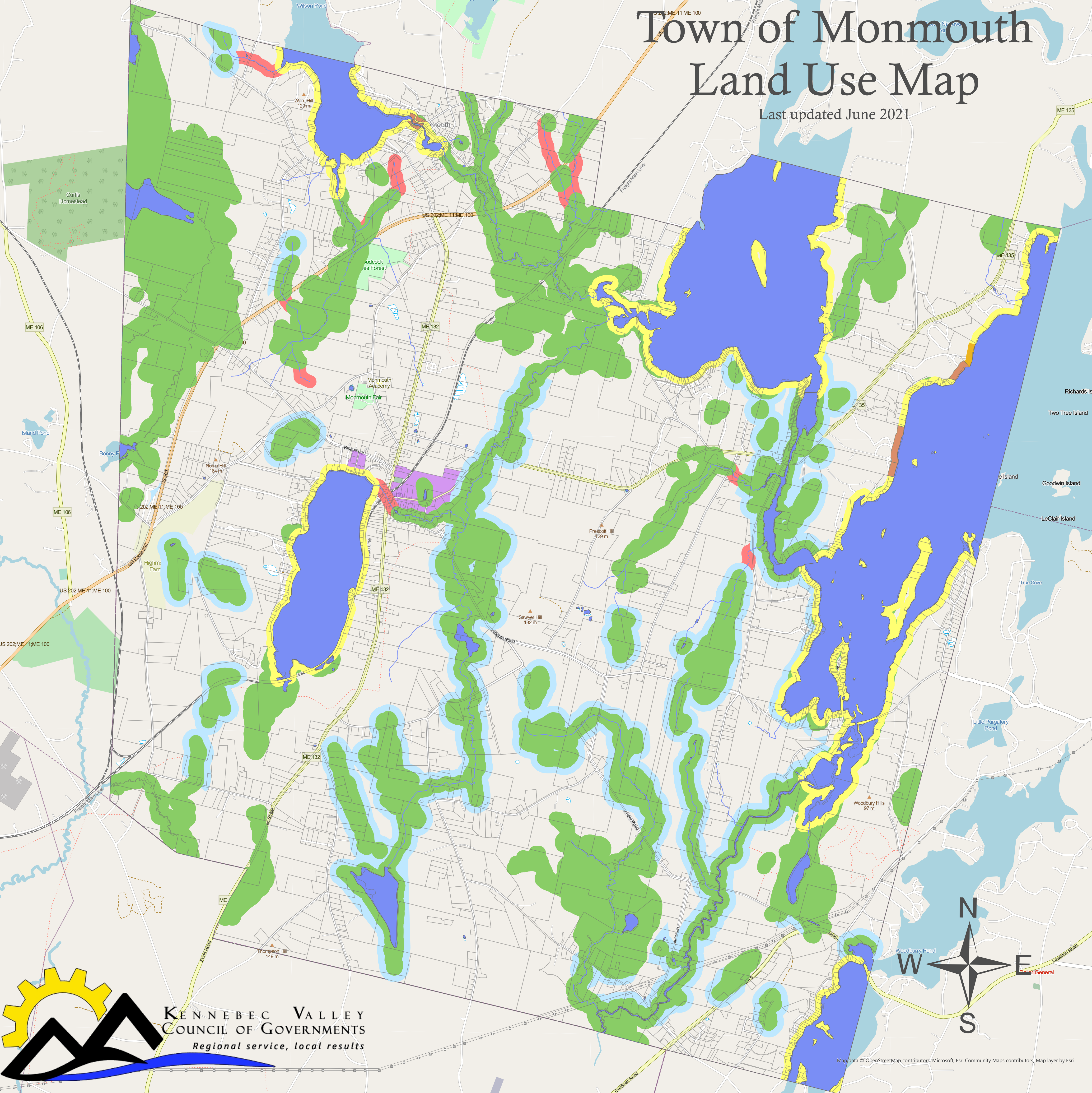
4. THERE MAY BE WETLAND AREAS PARTICULARLY FORESTED WETLAND AREAS, WITHIN THE TOWN OF MONMOUTH, WHICH ARE SUBJECT TO THE SHORELAND ZONING ORDINANCE BUT ARE NOT SHOWN ON THIS MAP DUE TO OBSCURED GROUND FEATURES BY SHADOW AND OR VEGETATION. A QUALIFIED INDIVIDUAL SHOULD BE CONSULTED PRIOR TO COMMENCING CTIVITIES IN OR NEAR WETLAND AREAS.

5. DATA PRESENTED ON THIS MAP IS FOR INFORMATIONAL PURPOSES AND MAY NOT HAVE BEEN PREPARED FOR OR BE SUITABLE FOR LEGAL, ENGINEERING, OR SURVEYING PURPOSES. IT DOES NOT REPRESENT AN ON-THE-GROUND SURVEY AND REPRESENTS ONLY THE APPROXIMATE RELATIVE LOCATION OF PROPERTY BOUNDARIES.

6. MAP PRODUCED BY KENNEBEC VALLEY COUNCIL OF GOVERNMENTS.

THE SHORELAND ZONING MAP FOR THE TOWN OF MONMOUTH SHEET 1 OF 1 SHEET WAS ADOPTED BY THE TOWN OF MONMOUTH AT THE TOWN MEETING ON JUNE 8TH, 2021.

ATTESTED: KIMBERLY BROOKS, DEPUTY TOWN CLERK



Map data © OpenStreetMap contributors, Microsoft, Esri Community Maps contributors, Map layer by Esri